

# 2i Touchless-Dispense Foot Pedal Installation Guide

Below are instructions for installing the 2i Touchless-Dispense Foot Pedal. It can be ordered with part number: 2iFTPDLK.

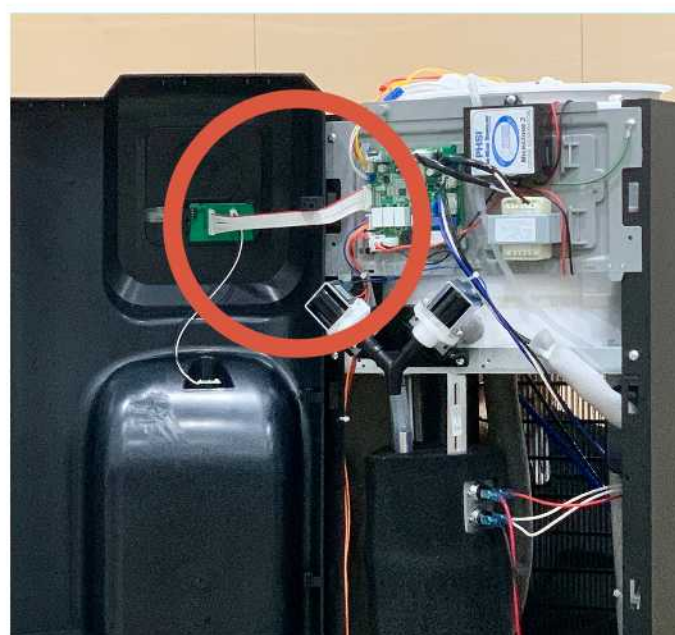


## WHAT TO DO:

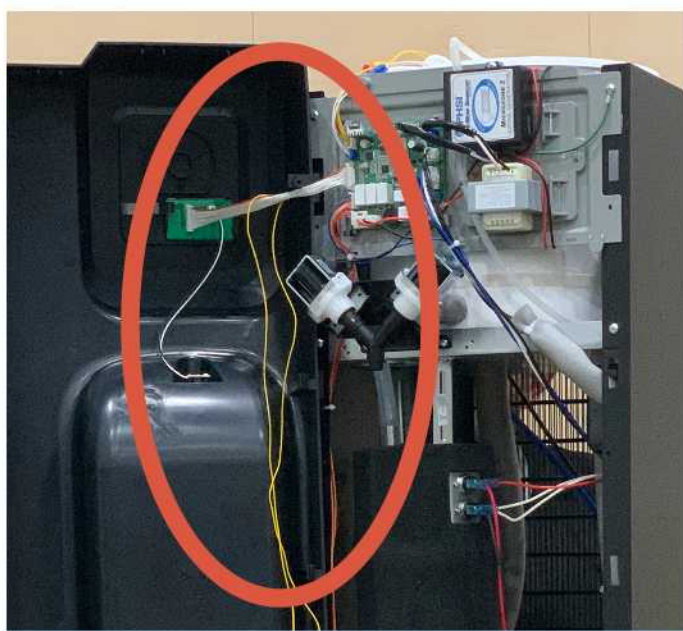


**Step 1:** Gain access to the display board

**Note:** Remove front panel, but leave the wires connected to the display board.



**Step 2:** Remove the ribbon wire that connects the touch pad to the display board.



**Step 3:** Connect the wire harness for the foot pedal to the display board and the touch pad.

**Step 4:** The wire that connects to the foot pedal should be routed through the unit to connect to the foot pedal.

**Note:** Be sure to position the pedal and route the wire from the foot pedal into the machine so that there is no excess wiring that could cause a tripping hazard.

**Step 5:** Test and reassemble the unit.



For additional tips or assistance, contact Pure Water Technology technical support directly:

(855) 534-8332

