

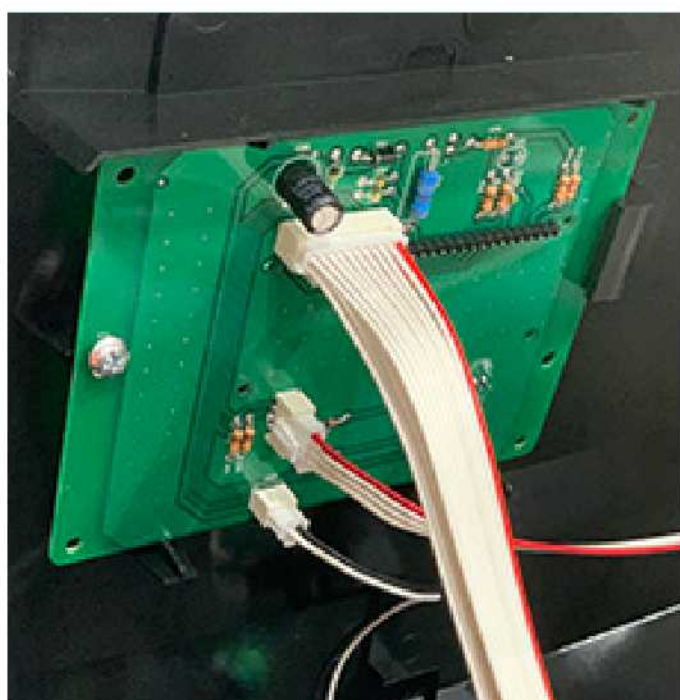
3i Touchless-Dispense Foot Pedal Installation Guide

Below are instructions for installing the 3i Touchless-Dispense Foot Pedal.

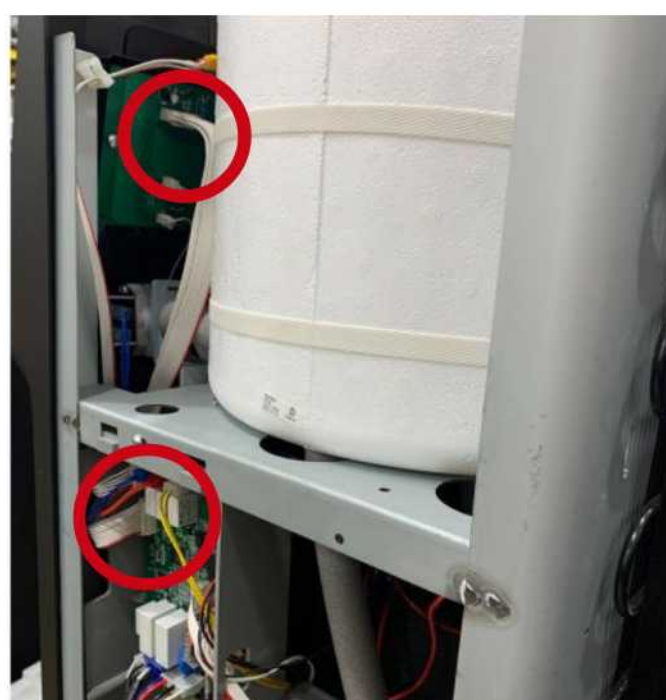
Part Number: 3iFTPDLK



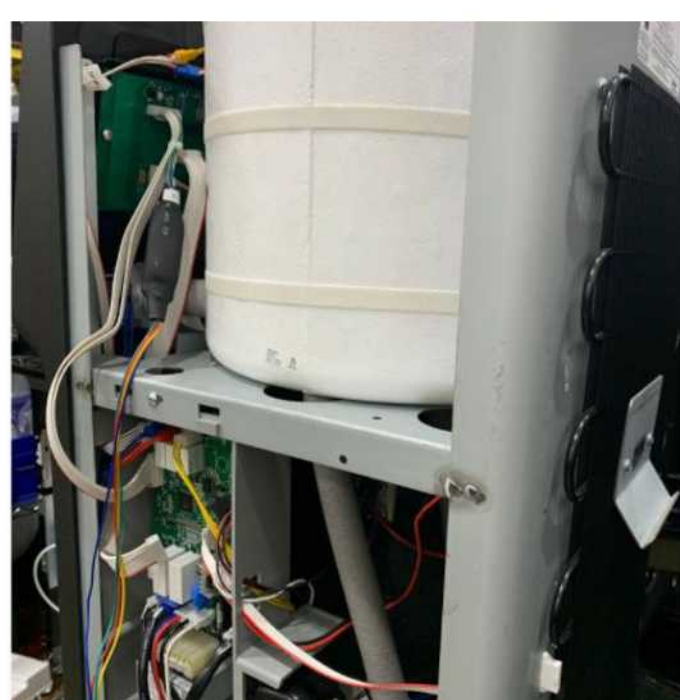
WHAT TO DO:



Step 1: Gain access to the main board.
a. Remove right side panel



Step 2: Remove the ribbon wire that connects the display board to the main board



Step 3: Connect the wire harness for the foot pedal to the display board and the main board. Be careful when routing the wire, as the metal frame is sharp.



Step 4: The wire that connects to the foot pedal should be routed through the unit to connect to the foot pedal. be sure to connect the same color wires together, red/ yellow to red/ yellow and blue/ green to blue/ green.

Step 5: Test and reassemble the unit.

Note: Be sure to position the pedal and route the wire from the foot pedal into the machine so that there is no excess wiring that could cause a tripping hazard.

HOW TO USE THE DUAL PEDAL SYSTEM



HOT

1. Press and hold **RED** pedal for 3 seconds until it beeps.
2. Press **BLUE** pedal to dispense hot water.

COLD

1. Press **BLUE** pedal to dispense cold water.

For additional tips or assistance, contact Pure Water Technology technical support directly:

(855) 534-8332

